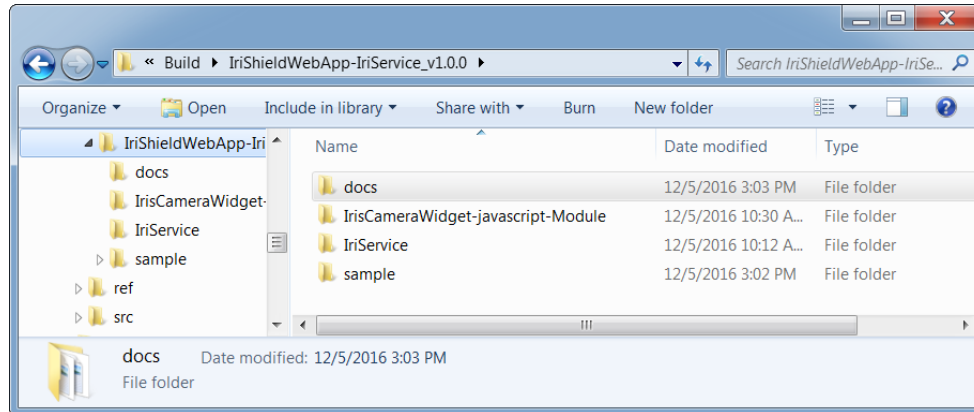


# IriShieldWebApp – Javascript – IriService with ASP.NET

## I. Package

Package contains:



- Docs:
  - o IrisCameraWidget-Javascript API and How to.docx: API of javascript module IrisCameraWidget.
  - o UserGuide-IriService-IriShieldWebApp-ASP.NET-sample.docx: how to install IriService and to use sample project.
- IrisCameraWidget-javascript-Module: javascript module to communication with IriService to control IriShield.
- IriService: installation package to IriService as Windows service.
- sample: contains solution IriShieldSampleNETLocalService with project in Visual Studio 2008 that is sample for using IrisCamereWidget with IriShield Mono/Bino to capture image and save to files.

System requirements:

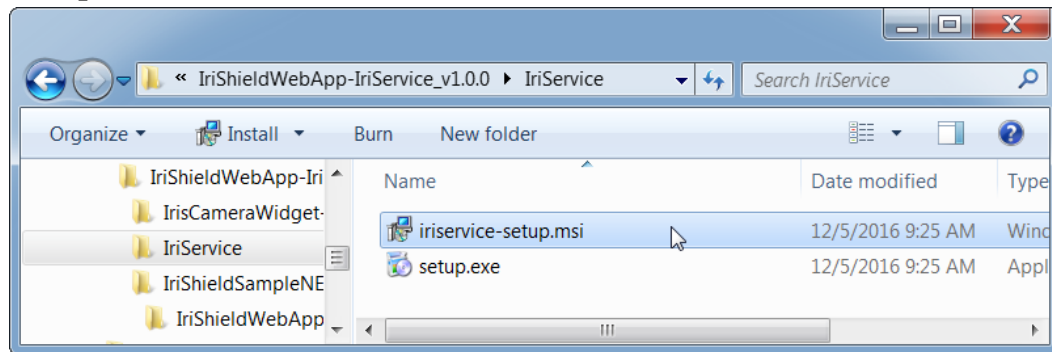
- Operating system: Windows 7
- Browser: Internet Explorer 11, FireFox, Chrome.

## II. Installation

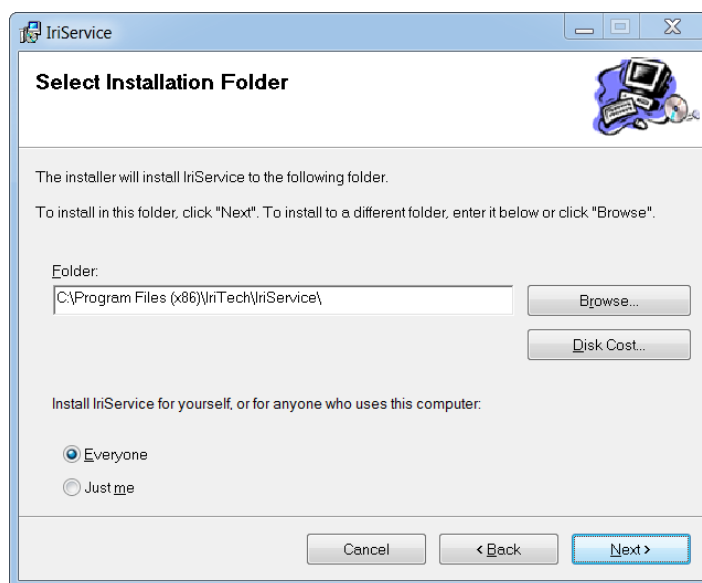
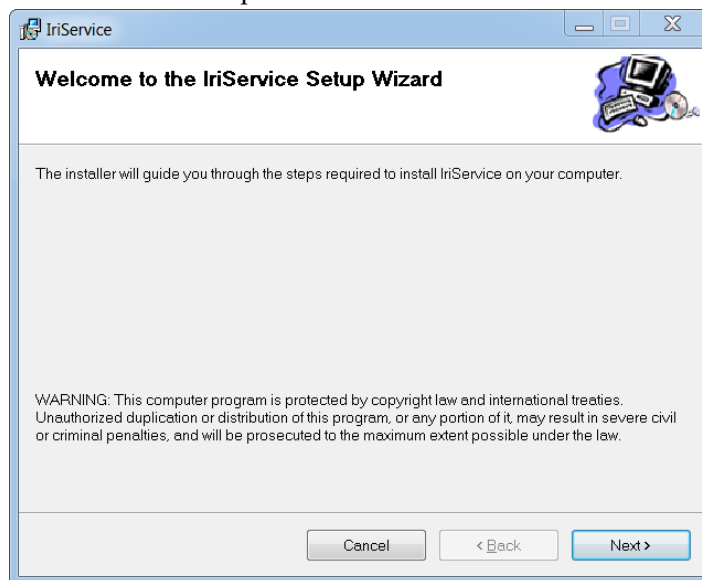
### 1. IriService

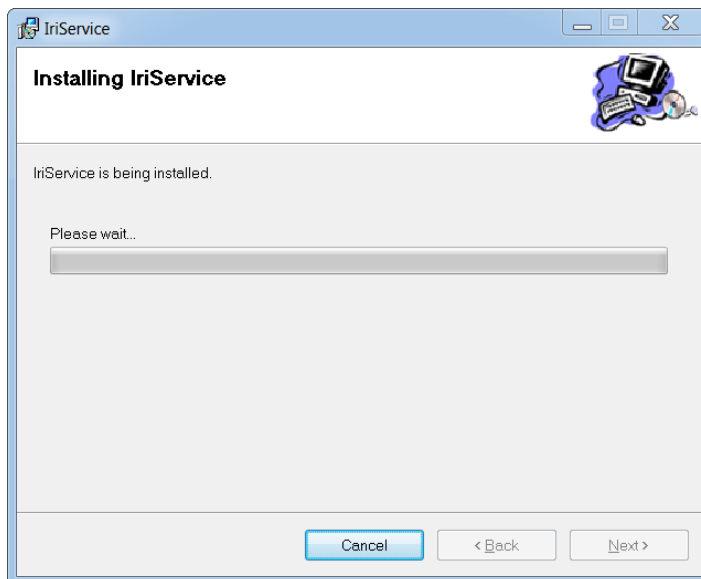
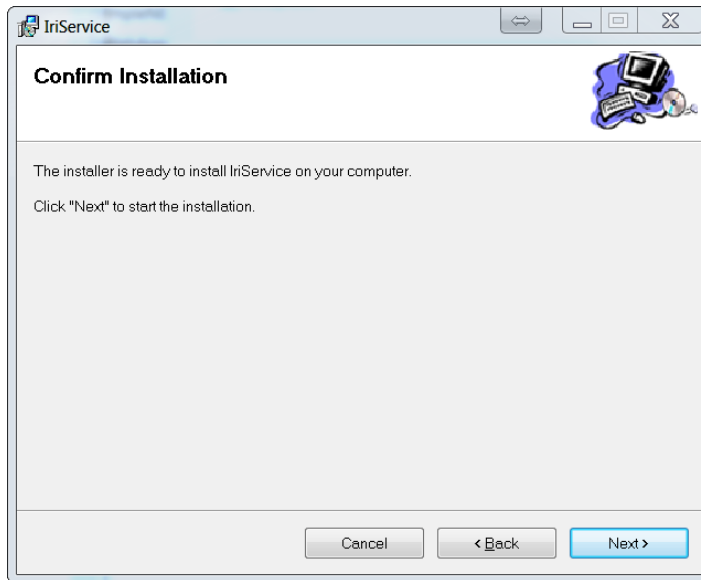
IriService is a window service that runs on client machine to control IriShield. IriShield web application will use module javascript IrisCameraWidget to communicate with this IriService to control IriShield.

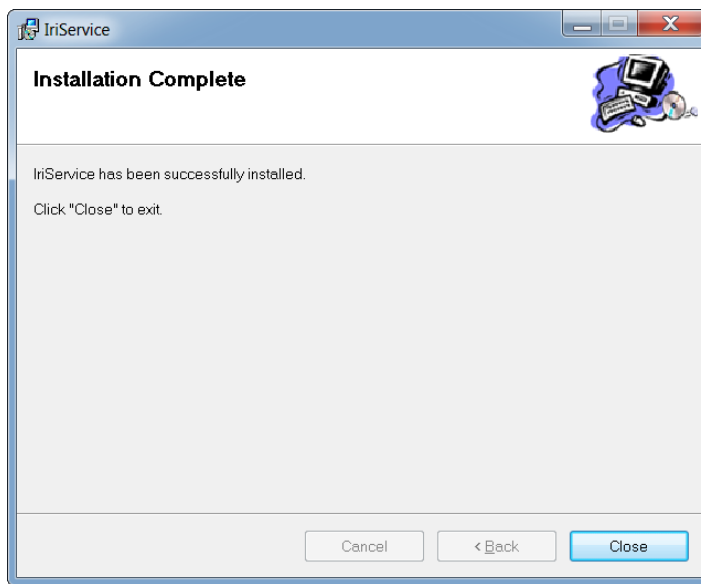
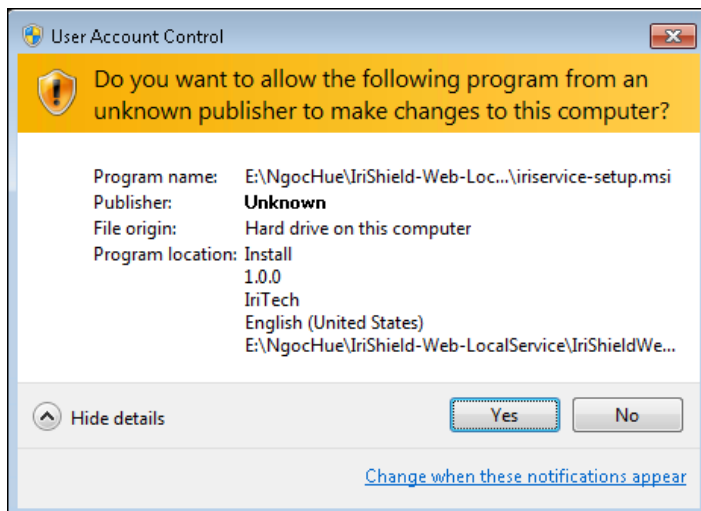
## 1.1. Setup



Run 'iriservice-setup.msi' to install IriService as window service, follows steps:







## 1.2.IriService Configuration

IriService installation is in "C:\Program Files (x86)\Iritech\IriService".

- Folder 'conf' : contains configuration file: config.ini

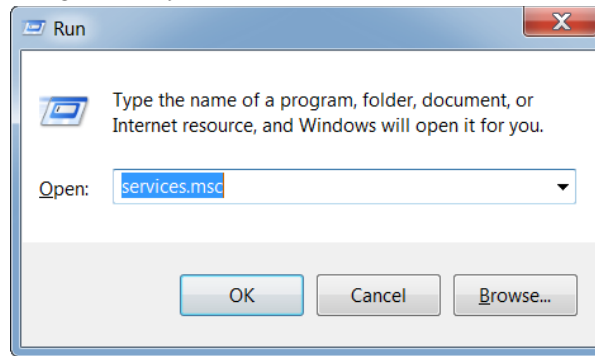
```
SERVER_PORTS = "8081, 4444s"  
SERVER_DOCUMENT_ROOT = "."  
SERVER_SSL_CERTIFICATE = "ssl/localhost.pem"  
HTPASSWD_FILE = "resource/password"  
DIGEST_DOMAIN = "administration"  
TOKEN_FILE = "resource/tokens.ini"
```

- Folder 'ssl': contains SSL certificate.

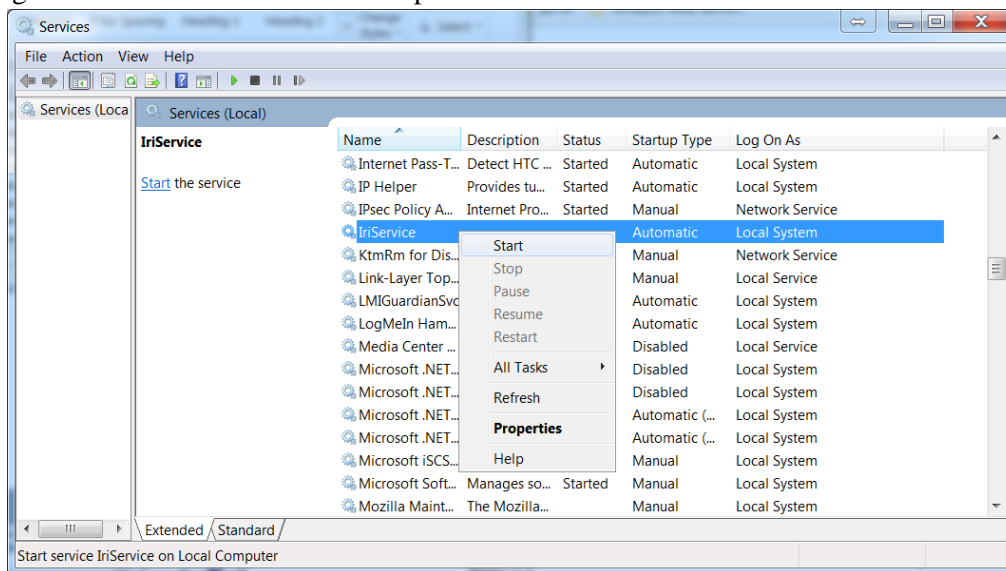
**Notes:** after changing configuration value, user must restart IriService.

## 1.3.IriService Control

Open Service management by Run with 'services.msc'



Right click on IriService to Start/Stop.

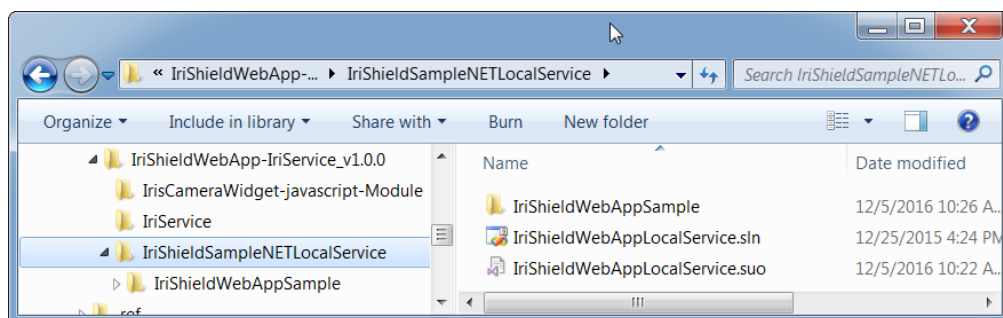


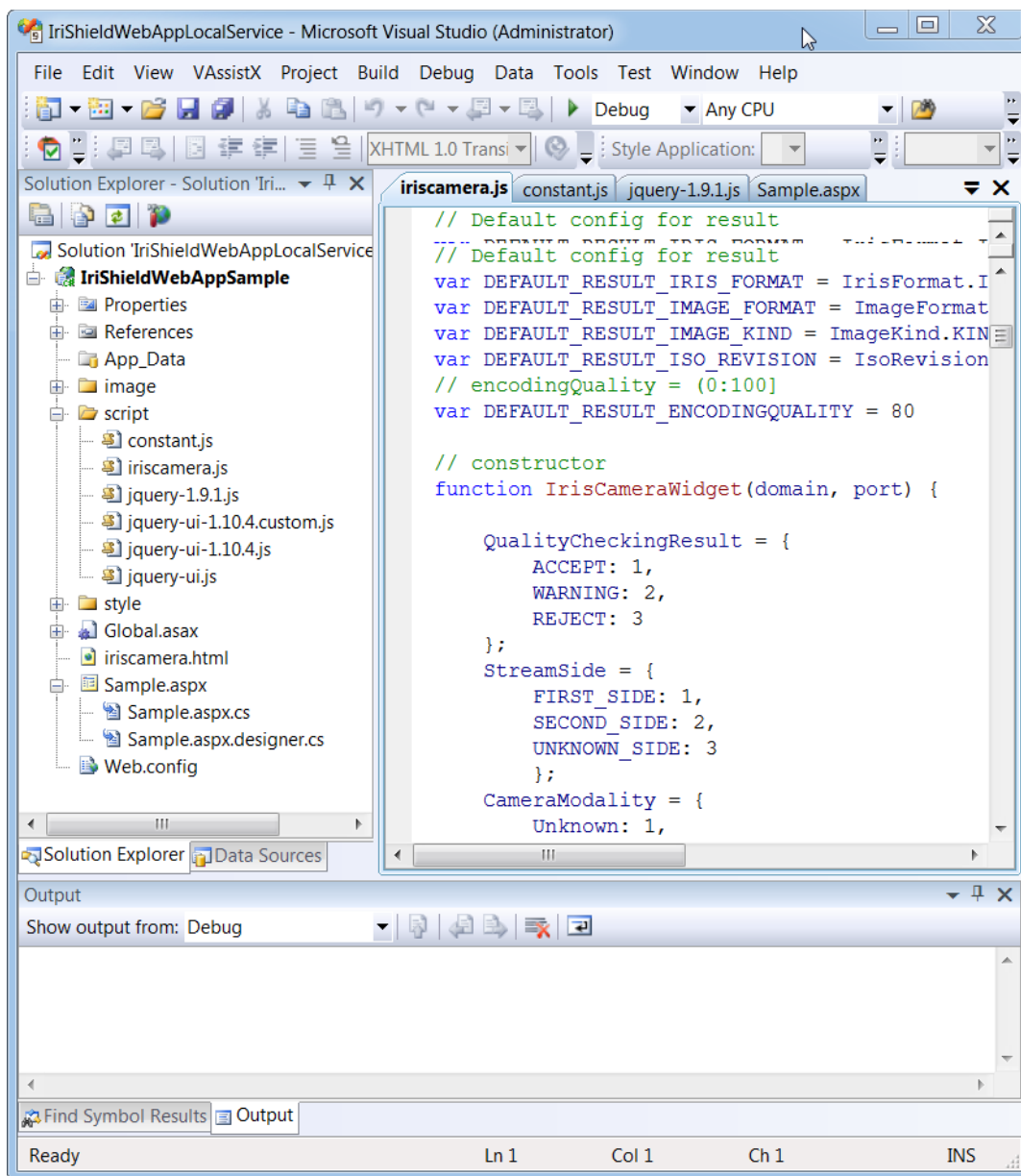
IriService is configured to 'Automatic' to startup when Windows start.

**Notes:** IriService must be running to use IriShield with IrisCameraWidget in Web application.

## 2. IriShieldSampleNETLocalService

Open solution file with VS 2008:

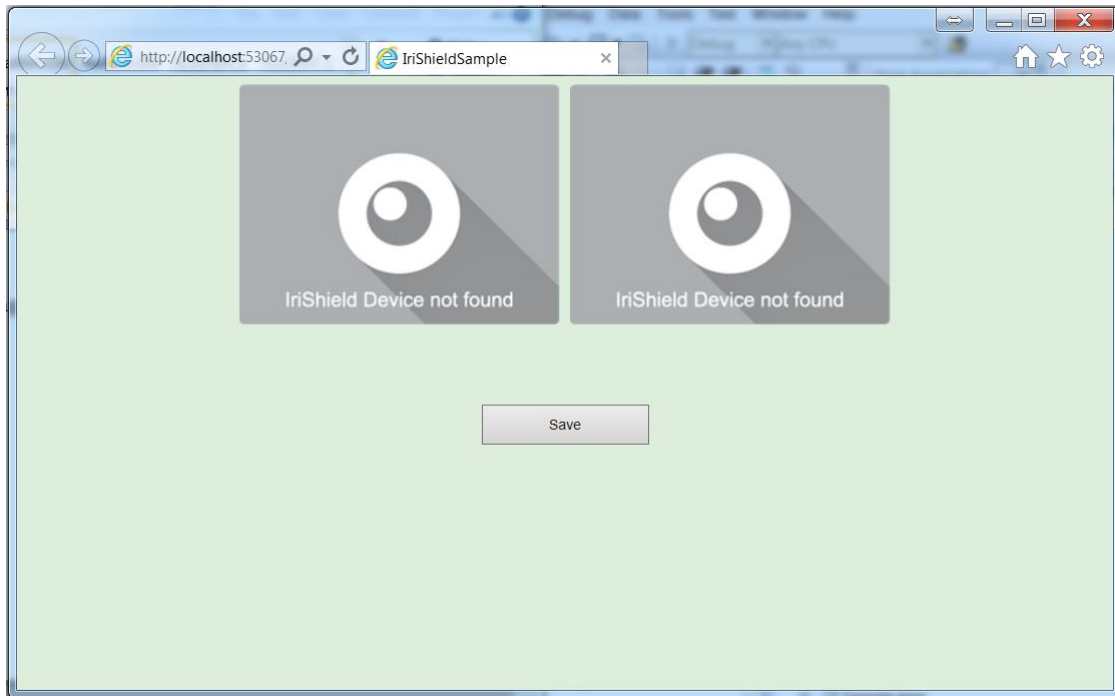




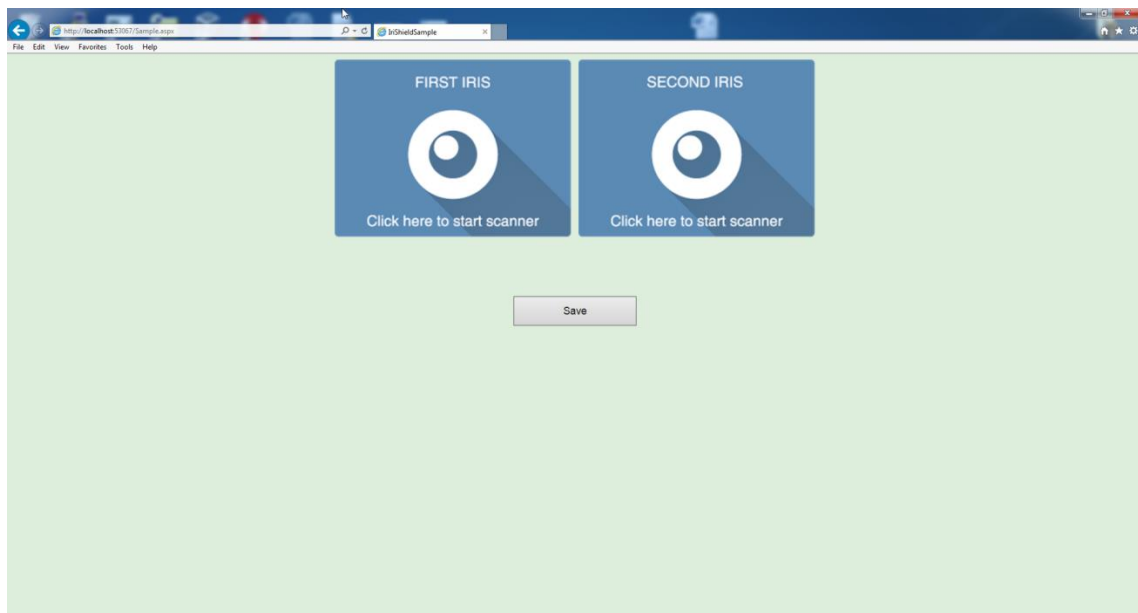
In this project:

- Sample.aspx: the main page that using IrisCameraWidget.

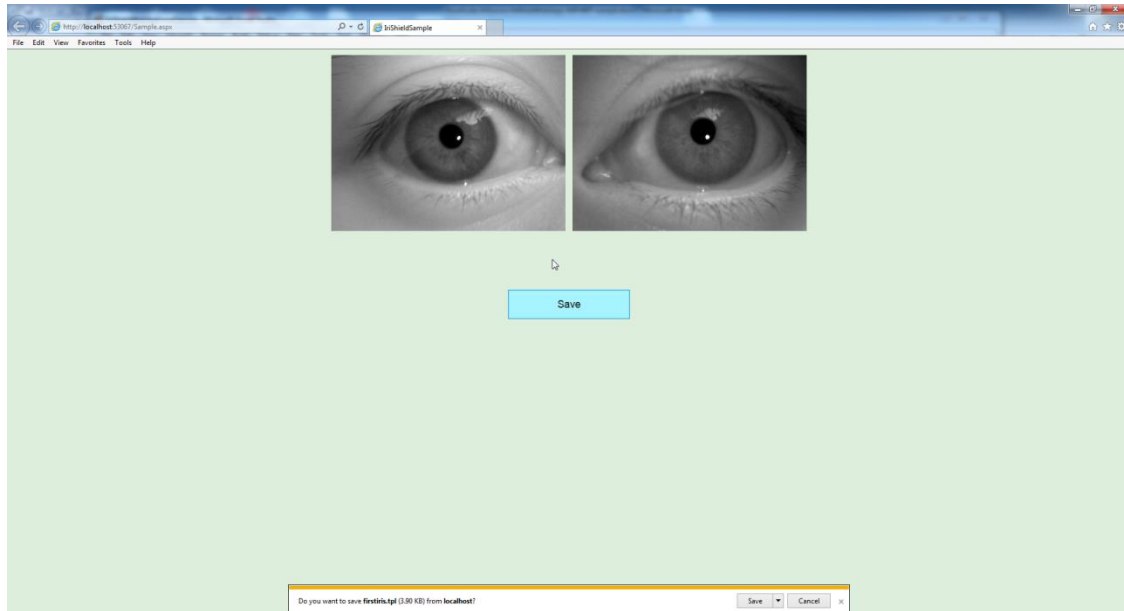
Build and run this application:



Attach IriShield to computer:



Click on image to capture and save iris image:



**Note:** IrisCameraWidget may detect IriShield slower on Chrome and Opera. You must edit the settings of browsers for detect quickly.

- Chrome: in the “Settings” -> “Show advanced settings” -> “Privacy” uncheck “Use a prediction service to load pages more quickly” .
- Opera: in “Menu” -> “Settings”->”Privacy & security” uncheck “Predict network actions to improve page load”.
- On Internet Explorer may not detect camera. You must add client website to “Trusted sites” of Internet Explorer

